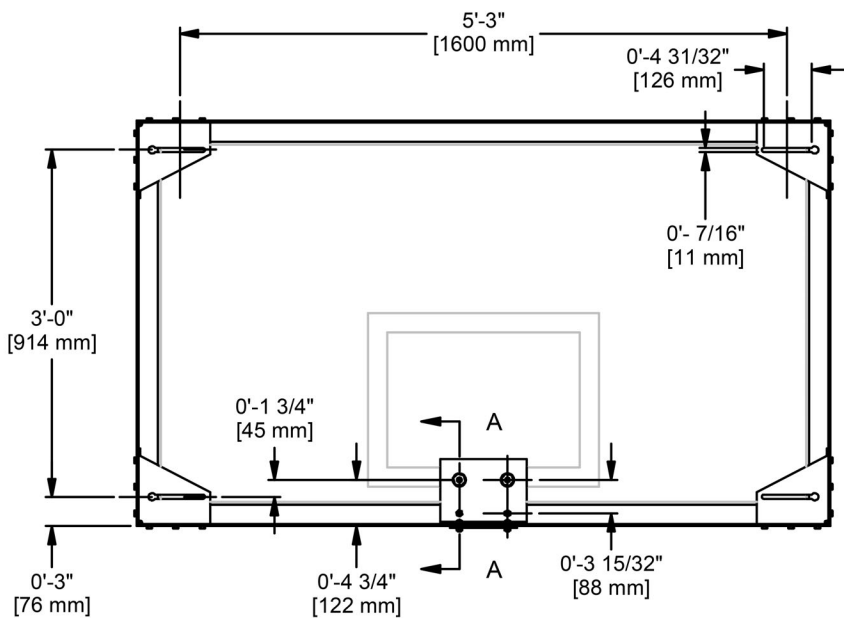
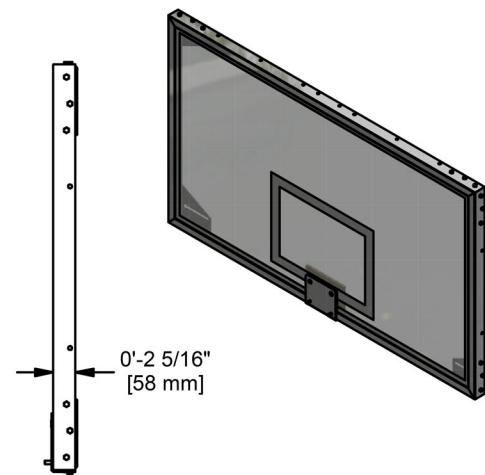


FRONT VIEW

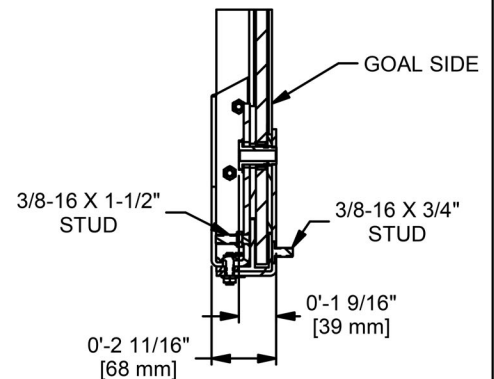


REAR VIEW

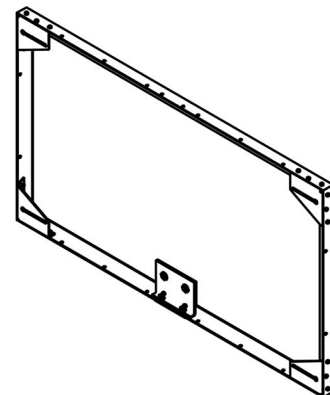
MATERIAL IS 1/2" THICK TEMPERED GLASS WITH ALUMINUM FRAME
FINISH IS GRAY POWDER COAT ON BRACKETS AND PLATES..



SIDE VIEW



SECTION A-A



C	JJC	11/15/17
B	RWP	06/06/08
A	JJC	12/01/03
REV	BY	DATE



Gared Holdings, LLC
9200 E. 146th St. Noblesville, IN 46060

THIS DOCUMENT CONTAINS TRADE SECRET AND OTHER MATERIALS WHICH ARE PROTECTED BY CONFIDENTIALITY NOTICE AND AGREEMENT AND BY COPYRIGHT. ANY USE OR COPYING OF THIS DOCUMENT EXCEPT AS AUTHORIZED BY GARED HOLDINGS, LLC IS STRICTLY PROHIBITED.

42" X 72" ALUMINUM FRAME GLASS BACKBOARD

DRAWN	CONNERLEY	DATE	5/2/2003	DATE ISSUED
APPROVED		DATE		
FILE LOC.	Q:\Inventor Files\			
SIZE	SCALE	SHT. NO.	PART NO.	REV
A	NONE	1 OF 2	AFRG42	C



MODEL AFRG42

ALUMINUM FRAME 72" X 42" RECTANGULAR GLASS BACKBOARD

The AFRG42 backboard shall be fabricated with an aluminum frame constructed of 0.200" thick extruded "F" channel with steel corner brackets. All steel components shall be powder coated with a durable gray finish. Aluminum-capped frame will not be acceptable. Manufacturer of backboard shall have over ten years of experience. Backboard shall meet NCAA and high school requirements.

Glass shall be ½" in thickness and fully tempered with white border and target lines permanently fused onto the surface. 12mm glass will not be considered equal to ½" glass, with a nominal thickness range of .485" to .515", and will not be used as a substitute for full ½" glass. Vinyl shock absorbing material insulates the glass from the frame. Goal mounting holes shall be on standard 5" horizontal and 4" vertical centers. Acrylic cushioning pad shall be used between steel mounting plate and glass to protect against possible breakage.

ACCESSORIES

GOALS

See Goal-Board Matrix specification sheet for goal compatibility.

Subject to design change and current manufacturing practices.